



# TECHNICAL SPECIFICATIONS

## IRRAflow CONTROL UNIT ICCU 020

The IRRAflow Control Unit allows users to customize patient treatment with intuitive software, which includes customizable safety features to provide control when managing ICP and CSF drainage.

### PROCEDURE SETTINGS

User-adjustable ICP limits, which trigger the audible system alarms for ICP

Setting	Value	Range
High ICP Settings	20 mmHg	11 to 99 mmHg 13 to 134 cmH2O
Irrigation Settings	90 mL/hr	3 mL/hr to 180 mL/hr
Treat Above Settings	5 mmHg	-99 to 99 mmHg -134 to 134 cmH2O
Low ICP Settings	1 mmHg	-99 to 10 mmHg -134 to 13 cmH2O



1. Measuring Scale
2. Intuitive Software
3. Hand Release Lever
4. Height Window Display
5. Drainage Collection Bag
6. Swing Arm
7. Laser Leveler

### TECHNICAL SPECIFICATIONS

**Power Supply:** 100 – 240 VAC, 50 – 60 Hz

**Dimensions:** 35 (H) x 14 (BW) x 19 (D) cm

**Weight:** 3.5 kg

**Operating time on battery at maximum irrigation rate with fully charged battery:** Minimum of 60 minutes

**MR Safe:** No

### CUSTOMER SERVICE

US 1-800-946-0458

EU +31-20-210-1098

US.customerservice@irras.com

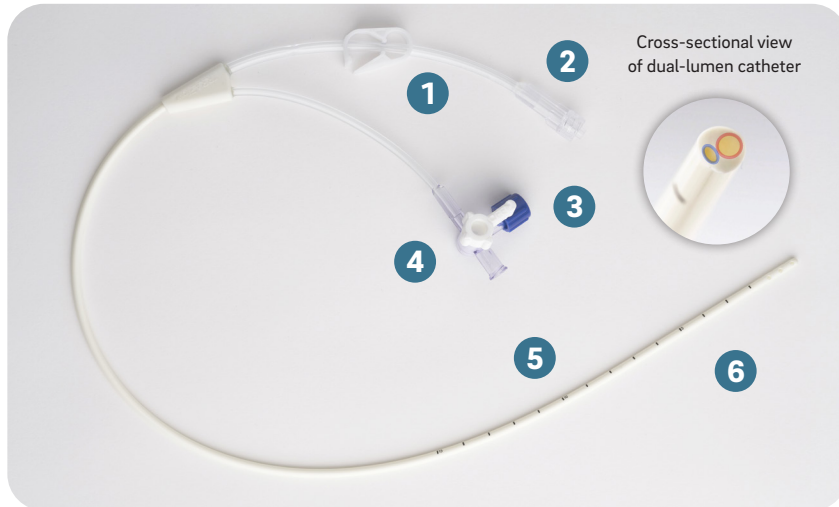
Global.customerservice@irras.com



www.irras.com

## IRRAflow DUAL-LUMEN CATHETER ICGS 020

The IRRAflow dual-lumen catheter is a dynamic product for advanced fluid management in the intracerebral space.



1. Pinch Clamp
2. Drainage Port
3. Stop Cock
4. Irrigation Port
5. Graduations every centimeter up to 15 cm
6. 9F, 38cm Dual-lumen Catheter

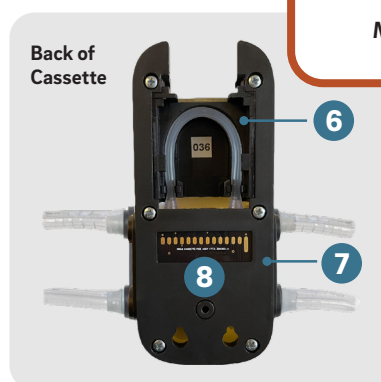
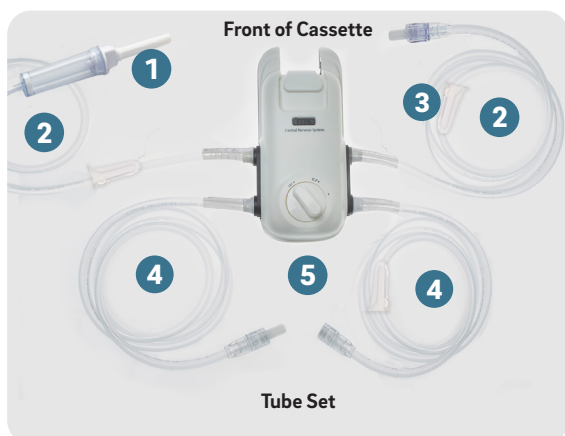
### TECHNICAL SPECIFICATIONS

- Cath. Material:** Pellethane
- Antimicrobial:** No
- Catheter tip:** Radiopaque
- Catheter Size:** 9F
- Dual-lumen:** Yes
- Cath Length:** 381 mm
- Drainage Holes:** 12
- Proximal Drainage Hole:** 1.76mm(2)
- Cath. Depth Marker:** 15
- MR Safe:** Yes\*
- Drainage Cross Sectional Area:** 3.3mm(2)
- Volume to fill the catheter with fluid though the irrigation lumen:** 0.8cc's
- Volume to fill the catheter with fluid through the drainage lumen:** 2.5cc's

\*The IRRAflow catheter is made from materials that are non-conductive, non-metallic, and non ferro-magnetic and therefore, per ASTM F2503-20, is, by definition, MR Safe. For safety within the MR environment and the MRI system room, always follow the instructions for use procedure to ensure that only the catheter inserted within the patient enters the MR environment or the MRI system room.

## IRRAflow TUBE SET & INTELLIGENT DIGITAL CASSETTE ICDS 020

The IRRAflow Tube Set and Intelligent Digital Cassette enables communication between the IRRAflow control unit and catheter to provide automated irrigation, fluid drainage, and ICP monitoring.



1. IV spike with drip chamber
2. Irrigation Tubing
3. Roller Clamps (3)
4. Drainage Tubing
5. Intelligent Digital Cassette
6. Seated Irrigation Tubing
7. Computer Board
8. Transducers

### TECHNICAL SPECIFICATIONS

- Cath. Material:** Pellethane
- ICP Measurement:** column of water & strain gauge
- ICP Measurement Accuracy Margin:** +/- 1.8 mmHg
- Transducers:** 2 included to ensure accuracy
  - 1st measures ambient pressure (calibration)
  - 2nd measures ICP (strain gauge transducer)
- MR Safe:** No

**Safety Mechanism:** The IRRAflow Tube Set has built-in safety mechanisms to help control the fluid movement within the tubing. Once the Tube Set is connected to the IRRAflow Control Unit, a peristaltic roller pump and pinch valve control the fluid movement by pinching off any fluid from the drainage line to measure ICP.